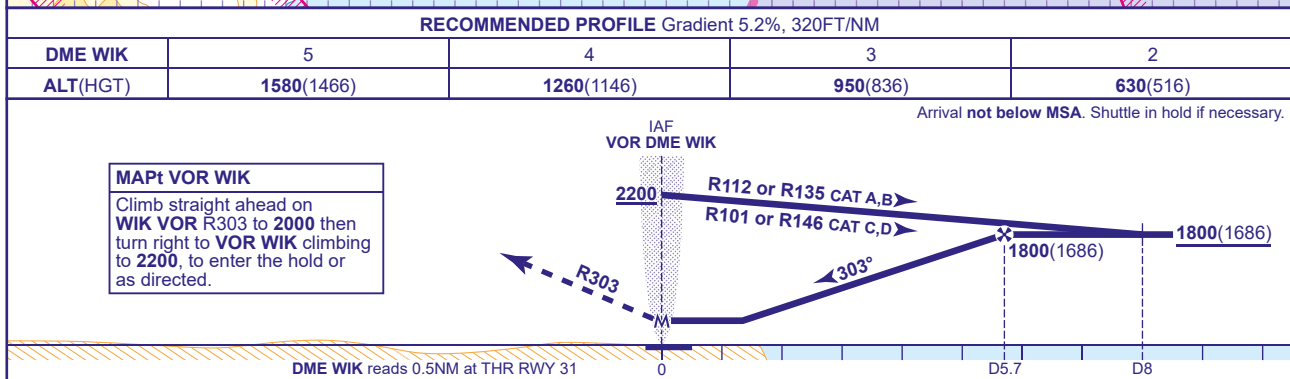


**WICK
VOR/DME
RWY 31**
(ACFT CAT A,B,C,D)



Aircraft Category		A	B	C	D	Rate of descent	G/S KT	160	140	120	100	80
OCA (OCH)	WITH DME	450(336)	460(346)	480(366)	500(386)		FT/MIN	840	740	630	530	420
	NO DME	700(586)	700(586)	700(586)	700(586)							
VM(C)OCA (OCH AAL)	Total Area	630(504)	630(504)	1090(964)	1090(964)							
	North of RWY 13/31	530(404)	620(494)	720(594)	820(694)							

AIRCRAFT UNABLE TO RECEIVE DME WIK (Only available when EG D809(S) and EG D809(C) are inactive)
As for basic procedure fly outbound for 2.5 MIN (CAT A,B); 2MIN (CAT C,D), then continue as for basic procedure descend to NO DME MDA(H).

NOTES

1	FAT offset 4° north of the extended RWY C/L.
2	Lowest altitude to commence procedure from hold is 2200 .

CHANGE (3/23): MAG INFO UPDATED. MSA REVISED. PROCEDURE ALTITUDES REVISED. MISSED APPROACH REVISED. OCA (OCH) NO DME MINIMA REVISED.